

R·M·D
KWIKFORM

Megashor



Megashor An ultra heavy duty modular shoring and propping system

1 - Introduction:

: - 1

Megashor is an ultra high-duty modular propping system designed for high axial loads. But its real strength lies in its versatility. From heavy lifting towers to travellers for tunnel formwork, bracing for excavations, shoring and trusses, Megashor can be configured for a huge variety of applications.

Megashor هو نظام دعم وحدات عالية الأداء مصمم للأحمال المحورية العالية. لكن قوتها الحقيقية تكمن في تنوعها. من أبراج الرفع الثقيلة لصيغ الأنفاق، تستعد للحفريات، المساند والجمالونات، يمكن تكوين Megashor لمجموعة متنوعة ضخمة من التطبيقات.

Faster:

:

- Manufactured using close-tolerance jigs - ensures consistent and accurate fabrication - Excellent assembly alignment on site, saving time, onsite modifications and labour costs.

- تم تصنيعها باستخدام أدوات ميكانيكية مرنة بها قدر عالي من السماحية - تضمن الاتساق وتصنيع دقيق - محاذاة جميع ممتازة قيد التشغيل الموقع، وتوفير الوقت والتعديلات في الموقع وتكاليف العمالة.

- Huge strength capability of Megashor means fewer components are needed and assembly time can be reduced, saving time and money.

- قدرة قوة ضخمة من Megashor تعني أقل المكونات مطلوبة ويمكن تقليل وقت التجميع، توفير الوقت والمال.

Easier:**أسهل:**

| | |
|--|---|
| <ul style="list-style-type: none">Eight strut sizes, from 15mm to 5400mm, plus a full range of accessories - can be assembled into props, towers and trusses of almost any length, all from standard components | <ul style="list-style-type: none">ثمانية أحجام الدعامات ، من 15 مم إلى 5400 مم ، بالإضافة إلى مجموعة كاملة من الملحقات - يمكن تجميعها في الدعائم والأبراج و دعامات من أي طول تقريباً ، كلها من مكونات قياسية. |
| <ul style="list-style-type: none">Our Superslim soldiers provide restraint to Megashor and are available in nine lengths from 10mm to 3600mm. Gives flexibility when planning the sizes of towers and centres of props - minimises the need for custom made equipment. | <ul style="list-style-type: none">توفر الكمرات الحديدية المجلفنة من Superslim نظام كبح وإرغام إلى Megashor ومتوفرة في تسعة أطوال من 10 ملم إلى 3600 ملم. يعطي المرونة عند التخطيط لأحجام الأبراج والمراكز الدعائم - تقلل من الحاجة إلى المعدات المخصصة. |

Safer:**:**

| | |
|--|--|
| <ul style="list-style-type: none">Unrivalled axial load capacity and high axial stiffness -Megashor will accommodate the rigours of ultra heavy duty propping, cofferdams, bridge bearing replacement and facade retention applications. | <ul style="list-style-type: none">سعة تحميل محورية لا مثيل لها وصلابة محورية عالية - سوف يستوعب Megashor قسوة الخدمة الشاقة للغاية دعم ، cofferdams ، واستبدال تحمل الجسر تطبيقات الاحتفاظ بالواجهة. |
| <ul style="list-style-type: none">Megashor is approved for support of bridges open to live traffic - bridge bearing replacement work can be carried out with minimum disruption to traffic flows. | <ul style="list-style-type: none">تمت الموافقة على Megashor لدعم الجسور المفتوحة لحركة المرور يمكن تنفيذ أعمال استبدال محمل الجسر مع الحد الأدنى من تعطيل حركة المرور. |
| <ul style="list-style-type: none">Comprehensive range of accessories | <ul style="list-style-type: none">مجموعة شاملة من الملحقات. |
| <ul style="list-style-type: none">Bracing options include fixed and adjustable steel flats, rapid bar tie, RMDK Slimshor and tubular struts. | <ul style="list-style-type: none">تتضمن خيارات التدعيم مسطحات فولاذية ثابتة وقابلة للتعديل وسريعة الربط بالقضيب ، Slimshor و RMDK والدعامات الأنبوبية. |

2- Applications:

2 - التطبيقات () :

Megashor - an incredibly versatile, ultra high-duty modular propping system designed for high axial loads.

Megashor - نظام دعم معياري متعدد الاستخدامات وفائق الأداء مصممة للأحمال المحورية العالية

- Heavy duty falsework
- Cofferdams
- Bridge launching
- Bearing replacement

- Facade retention
- Travelling slab and tunnel formwork
- Excavation support

- سقالات ثقيلة الحمولة (شديدة التحمل)
- الأوعية الحديدية
- تركيب الجسور
- استبدال أو تركيب ركائز الجسور

- تركيب واجهات المباني
- البلاطات المتحركة وقوالب الأنفاق
- تدعيم الحفر

Features & Benefits

Megashor can be assembled into many configurations including props, heavy lifting towers, frames and trusses.

■ Comprehensive range of sizes

Eight strut sizes, ranging from 15mm to 5400mm, plus a full range of accessories - Megashor can be assembled into props, towers and trusses of almost any length, all from standard components.

■ Heavy duty

Massive axial load capacity and high axial stiffness - Megashor will accommodate the rigours of heavy-duty falsework, cofferdams, bridge bearing replacement and façade retention applications.

■ Megashor is approved for support of bridges open to live traffic

Bridge bearing replacement work can be carried out with minimum disruption to traffic flows.

■ Global logistics chain

When and wherever you need it a rapid response can be assured.

■ Complimented by RMD Kwikform's Superslim range

RMD Kwikform Superslim Soldiers provide restraint to Megashor and are available in nine lengths from 10mm to 3600mm. This gives ultimate flexibility when planning the sizes of towers and centres of props - minimises the need for custom made equipment.

■ Quality assured manufacturing

Ensures consistent and accurate fabrication.

3- Details:

3 - التفاصيل:



Multiple Sizes

Megashor is manufactured in eight lengths, 5400, 2700, 1800, 900, 450, 270, 90 and 15mm so a prop of any length can be created.

يتم تصنيع Megashor بثمانية أطوال و 5400 و 2700 و 1800 و 900 و 450 و 270 و 90 و 15 مم حتى يمكن إنشاء دعامة من أي طول.



Compatibility

Superslim Soldier ledgers are available in nine lengths, 3600, 2700, 1800, 900, 720, 540, 360, 90, 10mm. Allowing a tower with almost any plan dimensions to be constructed.

الجسور المجلفنة Superslim متوفرة بتسعة أطوال ، 3600 ، 2700 ، 1800 ، 900 ، 720 ، 540 ، 360 ، 90 ، 10 مم. حتى تتناسب أبعاده مع أي منشأ.



Quality

Megashor is manufactured from two 6mm thick pressed steel channels spaced 110mm apart, with steel batten plates welded to the flanges at 900mm centres along the length of each side of Megashor shaft.

يتم تصنيع Megashor من عدد اثنين سمك 6 مم من عوارض الصلب المتباعدة على مسافات 110 مم ، مع عوارض الفولاذ ملحومة الحواف في مراكز 900 مم على طول كل جانب من رمح Megashor.



Simple

A 15mm thick end plate is welded to each end of Megashor leg, forming an overall section of 290 x 280mm. These end plates have six 22mm holes, which are used to bolt the Megashor legs end to end, using 4 or 6 M20 x 60 bolts and nuts.

نهاية لوح حديدية بسمك 15 ملم ملحومة من كل طرف ساق Megashor ، لتشكل القسم الكلي 290 × 280 مم. ألواح النهاية هذه لها ستة ثقوب 22 ملم ، وهي تستخدم لربط ساقى ال Megashor من النهاية إلى النهاية ، باستخدام 4 أو 6 صواميل و مسامير M20 x 60.

بسيط



Integration

Along the length of each channel, is a regular arrangement of 21mm diameter punched holes for fixing bracing members to. At 900mm centres, in both the batten plates and pressed channels are twin 18mm diameter holes, into which Superslim Soldiers are bolted

على امتداد طول كل عارض على شكل قناة يوجد بالترتيب ثقب بقطر 21 مم لتثبيت أضلاع عناصر التدعيم . على بعد 900 ملم في كلا المركزين ألواح متباعدة وقناتين مضغوطتين وبها فتحات بقطر 18 مم ليتم تثبيتها في الكمرات الحديدية المجلفنة Superslim.



Added Strength

Superslims are used as lateral restraint members and form the equipment into square or rectangular towers and grids. Either single or a combination of support towers can be formed in this way. Superslim Soldiers are bolted at node points using 2 M16 x 40 Grade 8.8 bolts and nuts.

يتم استخدام Superslims كأعضاء تقييد جانبية ويتم تشكيل المعدات في أبراج وشبكات مربعة أو مستطيلة. يمكن تشكيل إما أبراج فردية أو مجموعة من أبراج الدعم بهذه الطريقة. يتم تثبيت الكمرات المجلفنة Superslim عند نقاط العقدة باستخدام 2 من مسامير وصواميل M16 x 40 من الدرجة 8.8.



Options

Bracing options include fixed and adjustable steel flats, rapid bar tie, RMDK Slimshor and tubular struts

تتضمن خيارات الضبط والتدعيم ألواح مسطحة فولاذية ثابتة وقابلة للتعديل ، وقضيب ربط سريع ، و RMDK Slimshor ، ودعامات أنبوبي

خيارات



Megaprop

Using Frames Megashor leg sections can be combined into composites of 2, 3, 4, 6, 8, and 9 "Megaprops" capable of supporting even higher loads

يمكن دمج إطارات قطاع الساق Megashor مع الإطارات في تركيبات من 2 و 3 و 4 و 6 و 8 و 9 للقطاع "Megaprops" مما يزيد القدرة على دعم أحمال أعلى

خصائص مميزة

4 Components

Legs (Painted)



| Code | Description | Weight |
|----------|---------------------|---------|
| MSX10090 | Megashor Leg 90mm | 22.0kg |
| MSX10270 | Megashor Leg 270mm | 30.3kg |
| MSX10450 | Megashor Leg 450mm | 45.2kg |
| MSX10900 | Megashor Leg 900mm | 65.4kg |
| MSX11800 | Megashor Leg 1800mm | 113.3kg |
| MSX12700 | Megashor Leg 2700mm | 161.1kg |
| MSX15400 | Megashor Leg 5400mm | 304.4kg |

End Plate



| Code | Description | Weight |
|----------|-------------|--------|
| MSX10012 | End Plate | 9.5kg |

Screw Jack

AWL: Please refer to Megashor Technical Data Sheets.



| Code | Description | Weight |
|----------|---------------------------------|--------|
| MSX10011 | Screw Jack. Range = 410 - 620mm | 65.9kg |

Jack Spanner



| Code | Description | Weight |
|----------|--------------|--------|
| MSX10022 | Jack Spanner | 20.1kg |

Bearing Plate 40mm

Used to spread and transfer high loads between mechanical or hydraulic jacks and Megashor Jack Plate



| Code | Description | Weight |
|----------|-----------------------------|--------|
| MSX10021 | Megashor Bearing Plate 40mm | 26.2kg |

4 Components

Hydraulic Unit

AWL: Please refer to Megashor Technical Data Sheets.



| Code | Description | Weight |
|----------|----------------|---------|
| MSX10017 | Hydraulic Unit | 146.0kg |

Joint Stiffener



| Code | Description | Weight |
|----------|-----------------|--------|
| MSX10024 | Joint Stiffener | 8.4kg |

Rocking Head

Enables Megashor shafts to be connected to header beams at angles up to 45 degrees.



| Code | Description | Weight |
|----------|--------------------|--------|
| MSX10026 | Rocking Head 180mm | 47.9kg |

Plate Washer



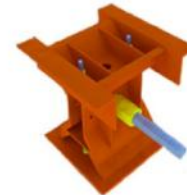
| Code | Description | Weight |
|----------|----------------------------------|--------|
| BNX20023 | Plate Washer 90 x 90 x 15 x 18mm | 0.92kg |

Brace Plates



| Code | Description | Weight |
|----------|-------------|--------|
| MSU10002 | Brace Plate | 60.3kg |

Wedge Release Jack



| Code | Description | Weight |
|----------|--------------------|--------|
| HGX10053 | Wedge Release Jack | 33.0kg |

4 Components

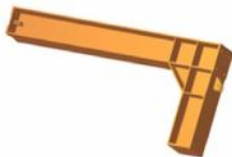
Megashor Fixed & Adjustable Braces

AWL - when attached to Megashor leg = 34kN (68kN per pair)



| Code | Description | Weight |
|----------|---------------------------------|--------|
| MSU10001 | Flat Brace 60 x 8mm alteration | - |
| MSX10003 | Flat Brace 60 x 8mm per metre | 3.7kg |
| MSX10005 | Vernier Braces Long Outer Galv | 11.5kg |
| MSX10006 | Vernier Baraces Long Inner Galv | 10.7kg |
| MSX10033 | Vernier Braces Short Inner Galv | 5.3kg |
| MSX10034 | Vernier Braces Short Outer Galv | 7.2kg |
| MSU10003 | Megashor Plan Brace Cleat | 1.5kg |

Half Portal Frame



| Code | Description | Weight |
|----------|----------------------------|---------|
| MSX10013 | Megashor Half Portal Frame | 453.8kg |

Lift Point



| Code | Description | Weight |
|----------|-----------------------------|--------|
| MSY10001 | Megashor Lift Point 50kN | 1.79kg |
| BNX20100 | Megashor pin M20 High Yield | 0.4kg |
| SSU10011 | Superslim R Clip 5x100mm | 0.03kg |

Truss Connector



| Code | Description | Weight |
|----------|--------------------------|--------|
| MSX10027 | Megashor Truss Connector | 15.4kg |

Megatruss Node



| Code | Description | Weight |
|----------|----------------|--------|
| MSX10030 | Megatruss Node | 67.3kg |

4 Components

Megatruss End Bearer



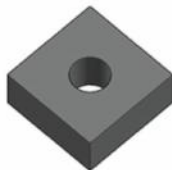
| Code | Description | Weight |
|----------|----------------------|---------|
| MSX10028 | Megatruss End Bearer | 111.6kg |

Megatruss Intermediate Bearer



| Code | Description | Weight |
|----------|-------------------------------|--------|
| MSX10019 | Megatruss Intermediate Bearer | 13.2kg |

Chord Spacer



| Code | Description | Weight |
|----------|------------------------------|--------|
| BNX20024 | Chord Spacer 60x60x20x22 dia | 0.5kg |

Push Pull Jacks



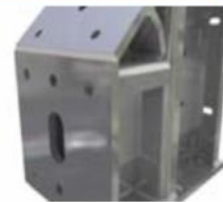
| Code | Description | Weight |
|----------|-----------------------------|--------|
| MSU10008 | Megashor Pus Pull Jack R/H | 74.8kg |
| MSU10009 | Megashor Push Pull Jack L/H | 74.8kg |

Push Pull Tilt Plate



| Code | Description | Weight |
|----------|-------------------------------|--------|
| MSU10007 | Megashor Push Pull Tilt Plate | 48.9kg |

90 Degree Corner



| Code | Description | Weight |
|----------|---------------------------|--------|
| MSU10005 | Megashor 90 Degree Corner | 68.8kg |

4 Components

Pull Pull Adaptor



| Code | Description | Weight |
|----------|----------------------------|--------|
| MSU10006 | Megashor Push Pull Adaptor | 19.0kg |

Superslim Soldier Beams



| Code | Description | Weight |
|----------|--------------------------------|--------|
| SSX13600 | Superslim Soldier 3600mm | 72.2kg |
| SSX12700 | Superslim Soldier 2700mm | 55.4kg |
| SSX11800 | Superslim Soldier 1800mm | 38.8kg |
| SSX10900 | Superslim Soldier 900mm | 22.0kg |
| SSX10720 | Superslim Soldier 720mm | 18.7kg |
| SSX10540 | Superslim Soldier 540mm | 15.2kg |
| SSX10360 | Superslim Soldier 360mm | 11.9kg |
| SSU10035 | Superslim Soldier - 360mm O/E | 11.7kg |
| SSU10045 | Superslim Soldier 360mm H/Shoe | 11.7kg |
| SSX10090 | Superslim Soldier 90mm | 7.3kg |
| SSX10040 | Superslim End Plate 10mm | 2.9kg |

4 Components

Nuts & Bolts



| Code | Description | Weight |
|----------|------------------------------------|--------|
| BNU10050 | Props Brace Pin M24 /M20 | 0.43kg |
| BNU12001 | Nut - M12 Hexagon Plated | 0.01kg |
| BNU12009 | Set Pin - M12x40 Gr8.8 plated | 0.05kg |
| BNU16001 | M16 Hexagon Nut - Grade 8.8 ZP | 0.03kg |
| BNU16007 | M16x40 Set Pin - Grade 8.8 ZP | 0.09kg |
| BNU16009 | M16x60 Bolt - Grade 8.8 ZP | 0.11kg |
| BNU20001 | M20 Hexagon Nut - Grade 8.8 ZP | 0.06kg |
| BNU20003 | Washer - M20 Round | 0.03kg |
| BNU20005 | M20x40 Set Pin - Grade 8.8 ZP | 0.27kg |
| BNU20010 | M20x60 Csk Set Pin - Grade 8.8 ZP | 0.18kg |
| BNU20011 | M20x60 Bolt - Grade 8.8 ZP | 0.28kg |
| BNU20013 | M20x80 Bolt - Grade 8.8 | 0.29kg |
| BNU20015 | M20x100 Bolt - Grade 8.8 | 0.32kg |
| BNU20016 | M20x130 Bolt - Grade 8.8 BZP | 0.40kg |
| BNX20027 | M20x45 Set Pin - Grade 8.8 BZP Csk | 0.17kg |
| BNX20028 | M20x50 Bolt - Grade 8.8 ZP | 0.18kg |
| BNX20030 | M20x90 Bolt - Grade 8.8 BZP | 0.28kg |
| BNU24001 | M24 Hexagon Nut | 0.06kg |
| BNU24002 | M24x110 Bolt - Grade 8.8 BZP | 0.1kg |
| BNU24008 | M24x180 - Grade 8.8 BZP Hex Bolt | 0.73kg |
| BNU42001 | M42x200 - Grade 8.8 Bolt ZP Short | 2.76kg |
| BNU42002 | M42 Nut Gr8 | 0.59kg |
| BNX52001 | M52 Hex Nut 8.8 Galv | 1.07kg |
| BNX52002 | M52x160 Gr 8.8 Socket Cap Screw | 3.93kg |

Heavy Duty Tie Beam



| Code | Description | Weight |
|----------|------------------------------|--------|
| MSU20004 | Megashor Heavy Duty Tie Beam | 39.1kg |

Header Beams



| Code | Description | Weight |
|----------|-----------------------------|----------|
| MSX10009 | Megashor Header Beam 950mm | 150.3kg |
| MSX10010 | Megashor Header Beam 3300mm | 670.1kg |
| MSX10014 | Megashor Header Beam 3810mm | 1038.1kg |
| MSX10015 | Megashor Header Beam 5000mm | 1322.0kg |

R·M·D
KWIKFORM

Rapidshor



Rapidshor A heavy duty galvanized modular steel shoring system

1 - Introduction:

: - 1

Rapidshor is a heavy duty galvanized modular steel shoring system with a robust design. Ease of assembly, low cost in use and an extensive range of accessories make it the premier choice in modular shoring.

Rapidshor هو نظام مساند فولاذي مجلفن للخدمة الشاقة مع تصميم قوي. سهولة التجميع ، والتكلفة المنخفضة في الاستخدام ومجموعة واسعة من الملحقات تجعله الخيار الأول في المساند المعيارية.

Faster:

:

- Modular design, minimised component count and integral connections ensure fast erection times.
- Easy and quick to erect, accommodating sloping ground and varying slab levels
- Regular patterns of snap on braces reduces both erection and inspection costs and compresses site programme time.

- يضمن التصميم المعياري ، وعدد المكونات المصغر والوصلات المتكاملة أوقات التركيب السريعة.
- سهل وسريع التركيب ، يستوعب المنحدر والأرض مستويات بلاطة مختلفة
- تقلل الأنماط العادية لنظم التدعيم ، إضافة الى تقليل كلاً من تكاليف التركيب والفحص وضغط وقت برنامج عمل الموقع.

Easier:**أسهل:**

| | |
|--|---|
| <ul style="list-style-type: none">■ Uniquely designed ledgers with locking wedge enables easy fixing onto leg cluster. | <ul style="list-style-type: none">■ تمكن العوارض الحديدية المجلفنة المصممة بشكل فريد ومع إستخدام إسفين القفل الى سهولة التثبيت على ساق العارض. |
| <ul style="list-style-type: none">■ Accommodating slopes - tilting head and bases - eliminate the need for the use of timber wedges to overcome sloping ground and elevated slabs. | <ul style="list-style-type: none">■ تتلاءم مع الميول - الرأس المائل والقواعد - تلغي الحاجة إلى استخدام أسافين خشبية للتغلب على المنحدرات والألواح المرتفعة. |
| <ul style="list-style-type: none">■ Low maintenance and long life - galvanised finish - eliminates corrosion, minimises maintenance and extends the lifetime of the system. | <ul style="list-style-type: none">■ صيانة منخفضة وعمر طويل - تشطيب مجلفن - يزيل التآكل ويقلل من الصيانة ويطيل عمر النظام. |
| <ul style="list-style-type: none">■ High 80kN leg capacity allows larger grids to be achieved, minimising components - saving erection time and labour costs. | <ul style="list-style-type: none">■ تسمح سعة الساق العالية التي تبلغ 80 كيلو نيوتن بتحقيق شبكات أكبر ، مما يقلل من المكونات - مما يوفر وقت التركيب وتكاليف العمالة. |

Safer:

:

| | |
|---|--|
| <ul style="list-style-type: none">■ Light but strong - 60.3mm dia high grade steel standards and 48.3mm diameter jacks increase the strength to weight ratio and allow greater jack extensions without bracing. | <ul style="list-style-type: none">■ خفيف ولكنه قوي - تزيد معايير الفولاذ عالية الجودة بقطر 60.3 مم ورافعات القطر التي يبلغ قطرها 48.3 مم من القوة إلى نسبة الوزن وتسمح بامتدادات مقبس أكبر بدون دعامة. |
|---|--|

2- Applications:

2 - التطبيقات () :

Rapidshor's modular bay sizes, wedge fixings and snap on braces make it highly cost effective for:

تجعل أحجام وحدات Rapidshor التركيبية ، وتثبيتات الوتد والمساند على عناصر التدعيم ، فعالة من حيث التكلفة من أجل:

- Tall birdcage or tower assemblies
- Static slab support
- Culvert and tunnel falsework
- Mobile shoring tables
- Building slab applications
- Stair access

- الأبراج القفصية الطويلة أو تركيبات الأبراج
- تدعيم البلاطات الثابتة
- سقالات المجاري وقنوات الصرف المفتوحة
- طبليات نظام التدعيم المتحركة
- تطبيقات بناء البلاطات
- مداخل السلالم

Features & Benefits

Modular system ensuring no loose parts or fittings for maximum cost efficiency and safety.

■ Cost reducing design

High capacity (80kN leg and 320kN four legged tower loads) dramatically reduces the number of components and associated erection and dismantling costs.

■ Tilting heads and bases

Mean that sloping slabs and ground levels are easily accommodated without the use of wedges, resulting in time and material savings and leading to lower costs.

■ Curved grids

Grids can easily be skewed for curved structures with 8 ledger connections at 45 degrees which means a reduced number of parts compared to a square grid arrangement.

■ Lightweight galvanised design

Rapidshor's galvanised design minimises maintenance, eliminates corrosion and assures the integrity of the product for life.

■ 48mm diameter jack with 500mm of adjustment

The stiffer Rapidshor jacks have far greater adjustment without bracing than most competitor systems leading to reductions in material, erection time and costs.

■ Quality assured manufacture in close tolerance jigs

Accuracy in fabrication leads to ease of assembly on site. Assured quality guarantees the strength of the material and its fabrication.

3- Details:

3 - التفاصيل:



80 kN leg loading

The Rapidshor support system has been designed to give a leg loading of 80kN. This has been achieved by using 60.3mm tube for standards, using high strength steel, with 48.3mm thick tube adjustable jacks. Parts are plated or galvanised for protection.

تم تصميم نظام دعم Rapidshor ليتحمل حمل رأسي 80 كيلو نيوتن. وقد تم تحقيق ذلك باستخدام أنبوب 60.3 مم للمعايير ، تم تصنيعه باستخدام فولاذ عالي القوة ، مع ارتفاعات أنبوبية قابلة للضبط بسماكة 48.3 مم. الأجزاء مطلية أو مجلفنة للحماية.

. 80



Versatile

Each size of standard has lug cluster discs fully welded at 500mm increments along their length, symmetrically from each end. This means that the open-ended standards can be erected either way, speeding up erection times.

يحتوي كل حجم قياسي على أقراص كتلة العروة ملحومة بالكامل بزيادات 500 مم على طولها ، بشكل متناظر من كل طرف. هذا يعني أنه يمكن إقامة المعايير المفتوحة في كلتا الحالتين ، مما يسرع من أوقات النصب والتركيب.



A range of standards

Two spigot standard lengths 1500mm and 2500mm, and five open-ended standard lengths 675mm, 1000mm, 1500mm, 2000mm and 2500mm.

طولين من الحنفية القياسية 1500 مم و 2500 مم ، وخمسة أطوال قياسية مفتوحة مفتوحة 675 مم ، 1000 مم ، 1500 مم ، 2000 مم و 2500 مم.

معايير متعددة



Tiling heads and bases

Tilts up to 30 degrees on the tilt axis, eliminating the need for timber wedges to overcome sloping ground and elevated slabs.

تميل حتى 30 درجة على محور الإمالة ، مما يلغي الحاجة إلى أسافين خشبية للتغلب على الأرض المنحدرة والألواح المرتفعة.



Adjustable jack

With an adjustable range of 25-540mm, the jack also has a domed end that enables concentric loading to degrees of slope in any direction.

مع نطاق قابل للتعديل من 25-540mm ، يحتوي المقبس أيضاً على نهاية مقببة تتيح التحميل المتحد المركز إلى درجات من الميل في أي اتجاه.

() قابل للتعديل



Quick, & easy standard braces

Braces have a forging at each end, which contains a shaped pin that clicks quickly into the spring latch on the Ledger ends, providing a significant time saving on site in comparison with traditional coupler fixings.

تحتوي الدعامات على تزوير في كل طرف ، والذي يحتوي على دبوس على شكل ينقر بسرعة في مزلاج الربيع على نهايات Ledger ، مما يوفر توفيرًا كبيرًا للوقت في الموقع مقارنة بتثبيتات نظام ال coupler التقليدي.

عناصر تدعيم قياسية سريعة التركيب



Rapidshor ledger

Four standard sizes of ledger available, 1200mm, 1500mm, 1800mm and 2400mm, with an additional three sizes that can be used in the system for more special applications such as vehicular access.

تتوفر أربعة أحجام قياسية للعوارض الحديدية المجلفنة ، 1200 مم ، 1500 مم ، 1800 مم و 2400 مم ، مع ثلاثة أحجام إضافية يمكن استخدامها في النظام لمزيد من التطبيقات الخاصة مثل الوصول إلى المركبات.

Rapidshor الحديدية



Stair tower

Modular Rapidshor stair units are used to provide access to one or more boarded levels within a Rapidshor structure. Available in both steel and aluminium.

يتم استخدام وحدات درج Rapidshor المعياري لتوفير الوصول إلى مستوى واحد أو أكثر داخل هيكل Rapidshor. متوفر في كل من الفولاذ والألمنيوم.



Adjustable braces

Two sizes of adjustable braces are available, which can be fixed at variable lengths to accommodate all bay width and lift height variations. The shaped pin clicks quickly into ledgers for a secure connection.

يتوفر حجمان من أفواس التدعيم القابلة للتعديل ، والتي يمكن تثبيتها بأطوال متغيرة لاستيعاب جميع اختلافات عرض الفتحة وارتفاع الرفع. ينقر الجزء المدبب الشكل بسرعة في العوارض الحديدية المجلفنة لاتصال آمن.

عناصر تدعيم قابلة للتعديل



Rapidshor U-heads

Three U-heads are available: one is 182mm wide and another is 220mm wide, and the third is the tilt head which is also 182mm.

تتوفر ثلاثة رؤوس على شكل حرف U: أحدهما بعرض 182 مم والآخر بعرض 220 مم ، والثالث هو الرأس المائل الذي يبلغ 182 مم أيضاً.

عناصر منحنية على شكل U

4 Components

Rapidshor Standards



| Code | Description | Weight |
|----------|---------------------------|--------|
| RSX11500 | Rapidshor Standard 1500mm | 8.3kg |
| RSX12500 | Rapidshor Standard 2500mm | 15.1kg |
| RSU40675 | Standard OE 675mm | 3.0kg |
| RSX41000 | Standard OE 1000mm | 5.4kg |
| RSX41500 | Standard OE 1500mm | 8.0kg |
| RSX42000 | Standard OE 2000mm | 10.8kg |
| RSX42500 | Standard OE 2500mm | 13.5kg |

Sleeves & Clip



| Code | Description | Weight |
|----------|-----------------------|--------|
| RSX10005 | Joint Sleeve 300mm | 1.5kg |
| RSX10010 | Base Sleeve 216mm | 1.1kg |
| RSX10009 | Rapidshor Sleeve Clip | 0.1kg |

Ledgers

AWL - the Ledger acting in tension or compression = 20kN



| Code | Description | Weight |
|----------|-------------------------|--------|
| RSX20300 | Rapidshor Ledger 300mm | 2.2kg |
| RSX20600 | Rapidshor Ledger 600mm | 3.2kg |
| RSX20900 | Rapidshor Ledger 900mm | 4.3kg |
| RSX21200 | Rapidshor Ledger 1200mm | 5.4kg |
| RSX21500 | Rapidshor Ledger 1500mm | 6.4kg |
| RSX21800 | Rapidshor Ledger 1800mm | 7.5kg |
| RSX22400 | Rapidshor Ledger 2400mm | 9.6kg |
| RSX23000 | Rapidshor Ledger 3000mm | 11.8kg |

Adjustable Braces



| Code | Description | Weight |
|----------|--|--------|
| RSX30003 | Super Short Adjustable Jack Brace. Range: 840 - 1280mm | 6.4kg |
| RSX30002 | Short Adjustable Jack Brace. Range: 1085 - 1770mm | 8.1kg |
| RSX30001 | Long Adjustable Jack Brace. Range: 1530 - 2660mm | 11.4kg |

4 Components

Fixed Braces

*This Brace also fits a 900 x 1500mm bay.



| Code | Description | Weight |
|----------|---|--------|
| RSX31009 | Fixed Brace 1000 x 900mm (Self) | 4.9kg |
| RSX31012 | Fixed Brace 1000 x 1200mm (Purple) | 5.4kg |
| RSX31015 | Fixed Brace 1000 x 1500mm (Blue) | 8.0kg |
| RSX31018 | Fixed Brace 1000 x 1800 (Red) | 8.0kg |
| RSX31024 | Fixed Brace 1000 x 2400mm (White) | 9.9kg |
| RSX31509 | Fixed Brace 1500 x 900mm (Yellow) | 6.1kg |
| RSX31512 | Fixed Brace 1500 x 1200mm (Pink) | 6.6kg |
| RSX31515 | Fixed Brace 1500 x 1500mm (Orange) | 8.3kg |
| RSX31518 | Fixed Brace 1500 x 1800mm (Green) | 9.1kg |
| RSX31524 | Fixed Brace 1500 x 2400mm (Brown) | 12.9kg |
| RSX31530 | Fixed Brace 1500 x 3000mm (Light Brown) | 15.4kg |
| RSX32012 | Fixed Brace 2000 x 1200mm (Blue-Green) | 9.2kg |
| RSX32015 | Fixed Brace 2000 x 1500mm (Yellow) | 7.5kg |
| RSX32018 | Fixed Brace 2000 x 1800mm (Black) | 12.4kg |
| RSX32024 | Fixed Brace 2000 x 2400mm (Bright Red) | 14.2kg |
| RSX32030 | Fixed Brace 2000 x 3000mm (Dark Brown) | 16.3kg |

Adjustable Jack



| Code | Description | Weight |
|----------|------------------------------------|--------|
| RSX10004 | Rapidshor Jack. Range = 25 - 540mm | 6.1kg |
| RSU10340 | Rapidshor Short Jack 25-340mm | 5.0kg |

Bases



| Code | Description | Weight |
|----------|----------------------|--------|
| RSX10002 | Rapidshor Base 165mm | 3.1kg |
| RSX10006 | Tilt Base 227mm | 7.7kg |

4 Components

Heads



| Code | Description | Weight |
|----------|--------------------------------------|--------|
| RSX10003 | Rapidshor Brace U-Head 182mm | 6.7kg |
| RSX10007 | Rapidshor Tilt Head 182mm wide | 13.1kg |
| RSX10008 | Rapidshor U Plate 8 thk x 182mm Wide | 5.3kg |
| RSX10001 | Rapidshor U Plate 8 thk x 220mm Wide | 5.7kg |

Board Bearers



| Code | Description | Weight |
|----------|---------------------|--------|
| ASX61200 | Board Bearer 1200mm | 5.7kg |
| ASX61800 | Board Bearer 1800mm | 7.9kg |
| ASX62400 | Board Bearer 2400mm | 10.2kg |
| ASX63000 | Board Bearer 3000mm | 15.2kg |

Stair Access

SWL = 2.5kN/m²



| Code | Description | Weight |
|----------|---------------------------|--------|
| RSX70003 | Stair Handrail | 11.0kg |
| RSX70006 | Stair Unit - Steel | 70.0kg |
| BNX12007 | M12x100 Set Pin gr8.8 BZP | 0.01kg |
| BNU12001 | M12 Nut gr8.8 BZP | 0.01kg |
| BNU12002 | M12 Round Washer | 0.01kg |

Here are some pictures from the project site showing the used heavy shoring and scaffoldings:













| | |
|--|---|
| <p>7 - General Information about heavy shoring and scaffoldings:</p> <p>The quantity of our heavy shoring and scaffoldings can cover the following:</p> | <p>- 7 المعدنية ثقيلة الحمولة:</p> <p>كمية الشدات والسقالات المعدنية لدينا تستطيع إنجاز التالي:</p> |
| <p>Area = 7000 M²</p> | <p>المساحة = 7000 م²</p> |
| <p>With Average Height = 12.00 M</p> | <p>بمتوسط ارتفاع = 12 م</p> |
| <p>Max. Height Used = 34.00 M</p> <p>On the third level of the elevated road in the project</p> | <p>أقصى ارتفاع تم تنفيذه باستخدامها = 34 م</p> |
| | |

| | |
|--|---|
| <p>8 - Vendor Details:</p> <p>Vendor:</p> <p>Address:</p> | <p>8 - تفاصيل البائع:</p> <p>:</p> <p>:</p> <p>تليفون:</p> <p>بريد الكتروني:</p> <p>ويمثلها:</p> |
|--|---|

| Sr. | Item number | Description | Quantity / No. |
|-----|-------------|-------------------------------------|----------------|
| 1 | BTM00003-s | Rapid Tie 20mm Connector | 1672 |
| 2 | BTM00005-s | Rapid Tie Hex Nut 55mm for 20mm Bar | 134 |
| 3 | BTM10004-s | Rapid Tie Waler Plate- HD Painted | 3752 |
| 4 | BTM10019-s | Rapid Tie Plas Tube /m | 3918 |
| 5 | BTM10250-s | Rapid Tie Bar 15mm x 250mm | 14 |
| 6 | BTM10500-s | Rapid Tie Bar 15mm x 500mm | 34 |
| 7 | BTM11250-s | Rapid Tie Bar 15mm x 1.25m | 11 |
| 8 | BTM11500-s | Rapid Tie Bar 15mm x 1.50m | 23 |
| 9 | BTM11750-s | Rapid Tie Bar 15mm x 1.75m | 55 |
| 10 | BTM12250-s | Rapid Tie Bar 15mm x 2.25m | 67 |
| 11 | BTM12750-s | Rapid Tie Bar 15mm x 2.75m | 84 |
| 12 | BTM13250-s | Rapid Tie Bar 15mm x 3.25m | 18 |
| 13 | BTM13500-s | Rapid Tie Bar 15mm x 3.50m | 63 |
| 14 | BTM13750-s | Rapid Tie Bar 15mm x 3.75m | 11 |
| 15 | BTM14000-s | Rapid Tie Bar 15mm x 4.00m | 35 |
| 16 | BTM14500-s | Rapid Tie Bar 15mm x 4.50m | 64 |
| 17 | BTM14750-s | Rapid Tie Bar 15mm x 4.75m | 19 |
| 18 | BTM15000-s | Rapid Tie Bar 15mm x 5.00m | 77 |
| 19 | BTM20001-s | Rapid Tie HL Plas Tube /6m | 1861 |
| 20 | BTM40550-s | Rapid Tie Bar 20mm x 5.5m | 141 |
| 21 | BTU10013-s | Rapid Tie Nut 20mm 150kN | 2042 |
| 22 | BTX10001-s | Rapid Tie Knock On Wing Nut | 4828 |

| Sr. | Item number | Description | Quantity / No. |
|-----|-------------|---|----------------|
| 23 | BTX10006-s | Rapid Tie Knock On Nut - Hi Load | 3340 |
| 24 | BTX10008-s | Rapid Tie Plastic Cone - Hi Load 26 Dia | 6160 |
| 25 | BTX10011-s | Rapid Tie Connector Ribbed - Water Bar | 4400 |
| 26 | BTX10015-s | Rapid Tie Connector 15mm | 7179 |
| 27 | BTX10017-s | Rapid Tie Nut - Hexagon 50mm | 1248 |
| 28 | BTX10029-s | Rapid Tie Waler Plate - Hi Load | 232 |
| 29 | BTX10100-s | Rapid Tie Bar 15mm x 1m | 34 |
| 30 | BTX40600-s | Rapid Tie Bar 20mm x 6m | 41 |
| 31 | BTX10580-s | Rapid Tie Bar 15mm x 5.8m | 24 |
| 32 | BTX10100-s | Rapid Tie Bar 15mm x 1m | 47 |
| 33 | BTX40600-s | Rapid Tie Bar 20mm x 6m | 22 |
| 34 | HTX24280-s | Anchor Screw M24 x 280mm | 672 |
| 35 | KPX53030-s | K/Stage Brace - Coupler 3030mm | 106 |
| 36 | KPX52730-s | K/Stage Brace - Coupler 2730mm | 387 |
| 37 | KPX52560-s | K/Stage Brace - Coupler 2560mm | 18 |
| 38 | KPX52170-s | K/StageBrace - Coupler 2170mm | 211 |
| 39 | KPX51790-s | K/Stage Brace - Coupler 1790mm | 405 |
| 40 | KPX51470-s | K/Stage Brace - Coupler 1470mm | 35 |
| 41 | KPM00014-s | K/Stage Base Jack | 350 |
| 42 | MSU10002-s | Megashor Brace Plate | 53 |
| 43 | MSU10003 | Megashor Plane Brace | 22 |
| 44 | MSU10005 | Megashor 90 Degree Corner | 26 |

| Sr. | Item number | Description | Quantity / No. |
|-----|-------------|--|----------------|
| 45 | MSU10007 | Megashor Push Pull Till Plate | 24 |
| 46 | MSU10008 | Megashor Push Pull Jack R/H Green | 448 |
| 47 | MSX10009 | Megashor Header Beam | 14 |
| 48 | MSX10011 | Megashor Screw Jack - Range: 410 - 620mm | 54 |
| 49 | MSX10028 | Megatruss intermediate bearer | 47 |
| 50 | MSX10022 | Megashor Jack Spanner | 24 |
| 51 | MSX10043 | Megashor Brace Base Plate | 39 |
| 52 | MSX10044-s | Megashor Brace Coupler | 178 |
| 53 | MSX12700-s | Megashor Leg 2700mm | 195 |
| 54 | MSX11800-s | Megashor Leg 1800mm | 92 |
| 55 | MSX10900-s | Megashor Leg 900mm | 85 |
| 56 | MSX10450-s | Megashor Leg 450mm | 290 |
| 57 | MSX10270-s | Megashor Leg 270mm | 273 |
| 58 | MSX10090-s | Megashor Leg 90mm | 97 |
| 59 | MSX10012-s | Megashor End Plate | 136 |
| 60 | MXX10022-s | Minima Tie Plug | 3256 |
| 61 | PRA70001 | Push Pull Prop Long 3050-5530 | 44 |
| 62 | PRA70015 | Push Pull Prop Short 1820-3100 | 2380 |
| 63 | PRM00007-s | Push Pull Prop - Swivel Plate | 46 |
| 64 | PRX10001-s | Prop - Adjustable No 1 | 315 |
| 65 | PRX10000-s | Prop - Adjustable No 0 | 110 |
| 66 | RPX10004-s | R/Ply A' Clamp Panel to Panel | 264 |

| Sr. | Item number | Description | Quantity / No. |
|-----|-------------|--|----------------|
| 67 | RPX10005-s | R/Ply B' Clamp tube to Panel | 13358 |
| 68 | RSX43000-s | Rapidshor Standard OE 3000mm | 16295 |
| 69 | RSX42500-s | Rapidshor Standard OE 2500mm | 3232 |
| 70 | RSX42000-s | Rapidshor Standard OE 2000mm | 3253 |
| 71 | RSX41500-s | Rapidshor Standard OE 1500mm | 2638 |
| 72 | RSX41000-s | Rapidshor Standard OE 1000mm | 2183 |
| 73 | RSX22400-s | Rapidshor Ledger 2400mm | 5297 |
| 74 | RSX21800-s | Rapidshor Ledger 1800mm | 8224 |
| 75 | RSX21500-s | Rapidshor Ledger 1500mm | 5990 |
| 76 | RSX21200-s | Rapidshor Ledger 1200mm | 5570 |
| 77 | RSX20900-s | Rapidshor Ledger 900mm | 39194 |
| 78 | RSX20600-s | Rapidshor Ledger 600mm | 18645 |
| 79 | RSX20300-s | Rapidshor Ledger 300mm | 4049 |
| 80 | RSX32018-s | Rapidshor Brace 2000 x 1800mm | 0 |
| 81 | RSX31524-s | Rapidshor Brace 1500 x 2400mm | 3956 |
| 82 | RSX31518-s | Rapidshor Brace 1500 x 1800mm | 10673 |
| 83 | RSX31515-s | Rapidshor Brace 1500 x 1500mm | 1931 |
| 84 | RSX31512-s | Rapidshor Brace 1500 x 1200mm | 347 |
| 85 | RSX31024-s | Rapidshor Brace 1000 x 2400mm | 112 |
| 86 | RSX31018-s | Rapidshor Brace 1000 x 1800mm | 102 |
| 87 | RSX31012-s | Rapidshor Brace 1000 x 1200mm | 209 |
| 88 | RSX31015-s | Rapidshor Brace 1000 x 1500mm / 1500 x 900mm | 5062 |

| Sr. | Item number | Description | Quantity / No. |
|-----|-------------|---------------------------------------|----------------|
| 89 | RSX31009-s | Rapidshor Brace 1000 x 900mm | 175 |
| 90 | RSX10003-s | Rapidshor Brace U-Head 182mm wide | 1267 |
| 91 | RSX10005-s | Rapidshor Stnd Joint Sleeve 300mm | 15135 |
| 92 | RSX30001-s | Rapidshor Brace - Long Adjustable | 2519 |
| 93 | RSX30002-s | Rapidshor Brace - Short Adjustable | 5074 |
| 94 | RSX10010-s | Rapidshor Base Sleeve 216mm | 824 |
| 95 | RSX10002-s | Rapidshor Base 165mm | 6824 |
| 96 | RSX10004-s | Rapidshor Jack | 10099 |
| 97 | RSX10007-s | Tilt Head 237mm | 2147 |
| 98 | RSX10009-s | Rapidshor Sleeve Clip | 3030 |
| 99 | RSX70006-s | Stair Unit Steel | 373 |
| 100 | RSX70003 | Stair Handrail | 216 |
| 101 | RSM31001 | Adjustable Bay Brace Long ME | 99 |
| 102 | RSM51509 | Fixed Cantilever Bracket 1500 x 900mm | 562 |
| 103 | RSA10007-s | Rapidshor Long Adj Brace | 97 |
| 104 | SBX67270 | UB 356 x 171 x 2700mm | 243 |
| 105 | SBX67360 | UB 356 x 171 x 3600mm | 45 |
| 106 | SBX67000 | UB 356 x 171 x 4570mm | 79 |
| 107 | SBX67610 | UB 356 x 171 x 6100mm | 234 |
| 108 | SGX12438 | Steelstage 2438mm | 6116 |
| 109 | SGX11829 | Steelstage 1829mm | 903 |
| 110 | SGX11750 | Steelstage 1750mm | 269 |

| Sr. | Item number | Description | Quantity / No. |
|-----|-------------|---------------------------------------|----------------|
| 111 | SGX11450 | Steelstage 1450mm | 267 |
| 112 | SGX12750 | Steelstage 1270mm | 1855 |
| 113 | SGX10850 | Steelstage 850mm | 113 |
| 114 | SIM17523-s | Special Turnbuckle 2150-2450(Painted) | 46 |
| 115 | SIM18391-s | Turnbuckle 1525-1830 | 460 |
| 116 | SSU10016-s | Turnbuckle 914-1160 | 78 |
| 117 | SIM18395-s | Long Turnbuckle Pins | 102 |
| 118 | SFX10002-s | Coupler - 90 Deg 2" x 2" | 9391 |
| 119 | SFX10003-s | Coupler - Swivel 2"x2" | 12878 |
| 120 | SFX10005-s | Coupler - Swivel 2.3/8" x 2" | 568 |
| 121 | SFX10018-s | Coupler - Half 2" x 2" | 683 |
| 122 | SFX10019-s | Coupler - Internal Sleeve | 14 |
| 123 | SFX10004-s | Coupler - Fixed 2.3/8" x 2" | 197 |
| 124 | SSX13600-s | Superslim Soldier 3600mm | 982 |
| 125 | SSX12700-s | Superslim Soldier 2700mm | 1293 |
| 126 | SSX11800-s | Superslim Soldier 1800mm | 796 |
| 127 | SSM11260-s | Superslim Soldier 1260mm | 20468 |
| 128 | SSX10900-s | Superslim Soldier 900mm | 240 |
| 129 | SSX10720-s | Superslim Soldier 720mm | 216 |
| 130 | SSX10540-s | Superslim Soldier 540mm | 875 |
| 131 | SSX10360-s | Superslim Soldier 360mm | 457 |
| 132 | SSX10180-s | Superslim Soldier 180mm | 201 |

| Sr. | Item number | Description | Quantity / No. |
|-----|-------------|---------------------------------------|----------------|
| 133 | SSX10090-s | Superslim Soldier 90mm | 172 |
| 134 | SSM00008 | Superslim Fixed Strut 2896mm | 94 |
| 135 | SSX10039 | Superslim Porthole Bearing | 391 |
| 136 | SSX10042 | Superslim Support Plate | 532 |
| 137 | SSX10046-s | Superslim 19mm Pin and R Clip | 5705 |
| 138 | SSX10048 | Superslim Safety Latch | 548 |
| 139 | SSA60001-s | Superslim Brace Connector | 360 |
| 140 | SSM00006-s | Superslim Strut Adaptor | 1023 |
| 141 | SSM10005 | 45 Corner Angle ME | 562 |
| 142 | SSM0006 | Superslim Strut Adaptor | 146 |
| 143 | SSM00011-s | Superslim O Clamp | 2587 |
| 144 | SSM00019 | Special Plumbing Jack | 77 |
| 145 | SSU10003-s | Superslim 90 Deg Corner | 72 |
| 146 | SSU10005 | Superslim 45 Deg Corner | 72 |
| 147 | SSU10007 | Superslim Prop Jack LH Yellow | 84 |
| 148 | SSU10010 | Superslim Joint Stiffener | 356 |
| 149 | SSU10025-s | Superslim Adjustable Base 365 - 515mm | 56 |
| 150 | SSU10031-s | Superslim Access Bracket | 411 |
| 151 | SSU10032-s | Superslim Lifting Plate | 259 |
| 152 | SSU10034-s | Superslim Tilt Plate | 700 |
| 153 | SSU10038 | Superslim Anchor Plate 15mm | 45 |
| 154 | SSU20006 | Superslim Connector - Multislim 6 Way | 19 |

| Sr. | Item number | Description | Quantity / No. |
|-----|-------------|-------------------------|----------------|
| 155 | TUM20600 | Scaffold Tube 6.0m Gal | 40 |
| 156 | TUM20300 | Scaffold Tube 3.0m Gal | 70 |
| 157 | TUM20200 | Scaffold Tube 2.0m Gal | 1421 |
| 158 | TUM20150 | Scaffold Tube 1.5m Gal | 972 |
| 159 | TUM20120 | Scaffold Tube 1.2m Gal | 713 |
| 160 | TUM20050 | Scaffold Tube 0.5m Gal. | 81 |

| | | | |
|----------|--|--|--|
| A | HEAVY SHORING AND SCAFFOLDING MATERIALS (R.M.D) | | |
|----------|--|--|--|